



# HODSONS

PCM

**£750 PCM**

**Beech House**

, WF10 5QN





## PROPERTY SUMMARY

A two bedroomed ground floor apartment on Whitwood Lane within a gated development. The apartment is in a convenient location for local amenities and within reach of the M62 Motorway. The accommodation is inclusive of double glazing and electric heating and in brief comprises: Lounge, Kitchen, Two Bedrooms, Modern Shower Room. Allocated parking for one vehicle.

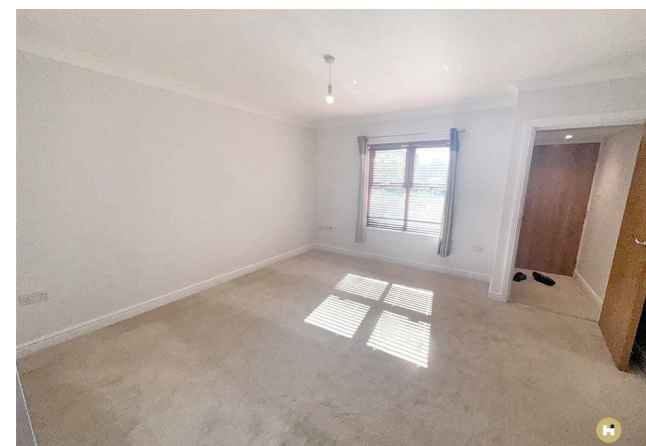
2



1



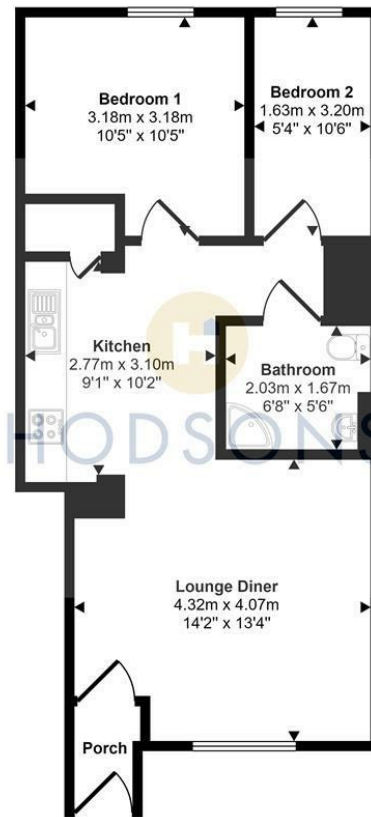
1







Approx Gross Internal Area  
50 sq m / 542 sq ft



Floorplan

This floorplan is only for illustrative purposes and is not to scale. Measurements of rooms, doors, windows, and any items are approximate and no responsibility is taken for any error, omission or mis-statement. Icons of items such as bathroom suites are representations only and may not look like the real items. Made with Made Snappy 360.

## LOCAL AUTHORITY

Wakefield Metropolitan District council

## TENURE

## COUNCIL TAX BAND

A

## VIEWINGS

By prior appointment only

| Energy Efficiency Rating                    |                         |           |
|---|-------------------------|-----------|
|   | Current                 | Potential |
| Very energy efficient - lower running costs |                         |           |
| (92 plus) A                                 |                         |           |
| (81-91) B                                   |                         | 82        |
| (69-80) C                                   | 73                      |           |
| (55-68) D                                   |                         |           |
| (39-54) E                                   |                         |           |
| (21-38) F                                   |                         |           |
| (1-20) G                                    |                         |           |
| Not energy efficient - higher running costs |                         |           |
| England & Wales                             | EU Directive 2002/91/EC |           |

Agents Note: Whilst every care has been taken to prepare these particulars, they are for guidance purposes only. All measurements are approximate and are for general guidance purposes only and whilst every care has been taken to ensure their accuracy, they should not be relied upon and potential buyers/tenants are advised to recheck the measurements



**OFFICE ADDRESS**  
37-39 George Street  
Wakefield  
West Yorkshire  
WF1 1LX

**OFFICE DETAILS**  
01924 200544  
wakefield@hodsonsproperty.co.uk  
www.hodsonsproperty.co.uk